

February 2017



EAA Members Meeting Information:

On the Fourth Monday of the Month

Held at the Edmond Fine Arts Institute  
27 E. Edwards  
Edmond 73034

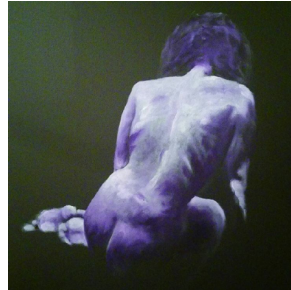
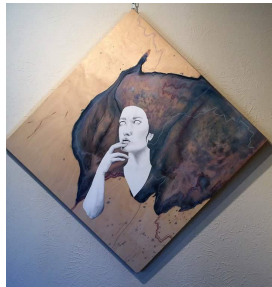
Next Meeting:  
February 27,  
2017  
At 7:00 PM

Contact:  
P.O. Box 1272  
Edmond, OK  
73083

HERE ARE JUST SOME OF THE REASONS TO LOVE BEING A MEMBER OF EAA!

LOOK FOR THE  HEARTS IN THIS NEWSLETTER!

## FEBRUARY ARTIST FOR DEMO



Gretchen Rehfeld received her Bachelors degree from the University of

Central Oklahoma in 2014, where she studied Art and Art History. During her time at UCO, she was an active member of the UCO Student Art Association, serving in several officer positions. Since graduation, her art has been featured at various local galleries. She currently works at Porch School and Art Supply as a product specialist, and recently served as guest juror for the Edmond Art Association Fall Show.

cont. on pg 2

 Amazing Demos

[www.edmondart.org](http://www.edmondart.org)

Continued....

Rehfeld is passionate about helping artists advance their skills through the art of critique. Professional critique is a way for artists to receive constructive feedback regarding their chosen concept, style, technique, and composition. Regular critique from colleagues or mentors also helps artists look at their work through a fresh pair of eyes, often uncovering questions and topics they hadn't anticipated. This ultimately provides the artist with better skills for communicating about their art. Join us for the February member meeting to watch and listen as Rehfeld conducts a professional critique for a few volunteer members.

[Note – If you were one of the three volunteers that signed up at the last meeting to be critiqued by Gretchen, then please show up 20-30 minutes prior to the meeting. This will give Gretchen the opportunity to study the pieces before presenting her critiquing presentation.]



**LOOK!**



## **DUES ARE PAST DUE!**

Individual - \$30

Family - \$40

Business or Institution - \$50

Student - \$15

Forms are available at  
[www.edmondart.org](http://www.edmondart.org)

Are you an EAA Member???

Do you have an upcoming art show/event you are a part of? Well, We want to support you!

Send in your upcoming show information by the 5<sup>th</sup> of each month and we will include it in that month's newsletter.



email information to: e.maricart@cox.net

Adrian Profile  
By  
Ladd Adams



# Artist of the Month February 2017

Congratulations to  
2 WINNERS!  
Ladd Adams &  
Chris Cargill



Looking for Elephants  
By  
Chris Cargill

→ Remember to bring in your 'Masterpiece' to the next meeting for the Month's Artist voting!





## Upcoming information:



**Display Opportunity** – The EAA has displays of **member's** art work at Edmond 1<sup>st</sup> Building & Edmond Public Works . In April, we will be changing out the displays. Start looking at your pieces to see what you would like to display for the public at these locations in Edmond.

**Art Show Opportunities** – Be on the look out in the next couple of month's newsletters for more information on the dates and details for the Spring & Fall 2017 Spring Creek EAA **Member's** Art Shows.



**Publication Opportunities** – Bring your art to be considered for 'Artist of the Month' in March - If you are a **Member** and you will be participating in the Spring Art Show than your art will be featured in all the publications for the Spring Creek EAA Member's Art Show! As a **member**, you also have other opportunities to be featured in public publications associated with the Edmond Art Association.

## FUN FACT :

It's February, so love is in the air....

There are many famous artist that paint from emotions and feelings.

THE KISS (1907-1908) is a much loved painting by Gustav Klimt, an Austrian painter.

NBC News reported on Feb. 12, 2017 that Oprah Winfrey sold a Gustav Klimt painting for \$150 million! Now that could buy you a lot of boxes of chocolate for your sweet-heart!

